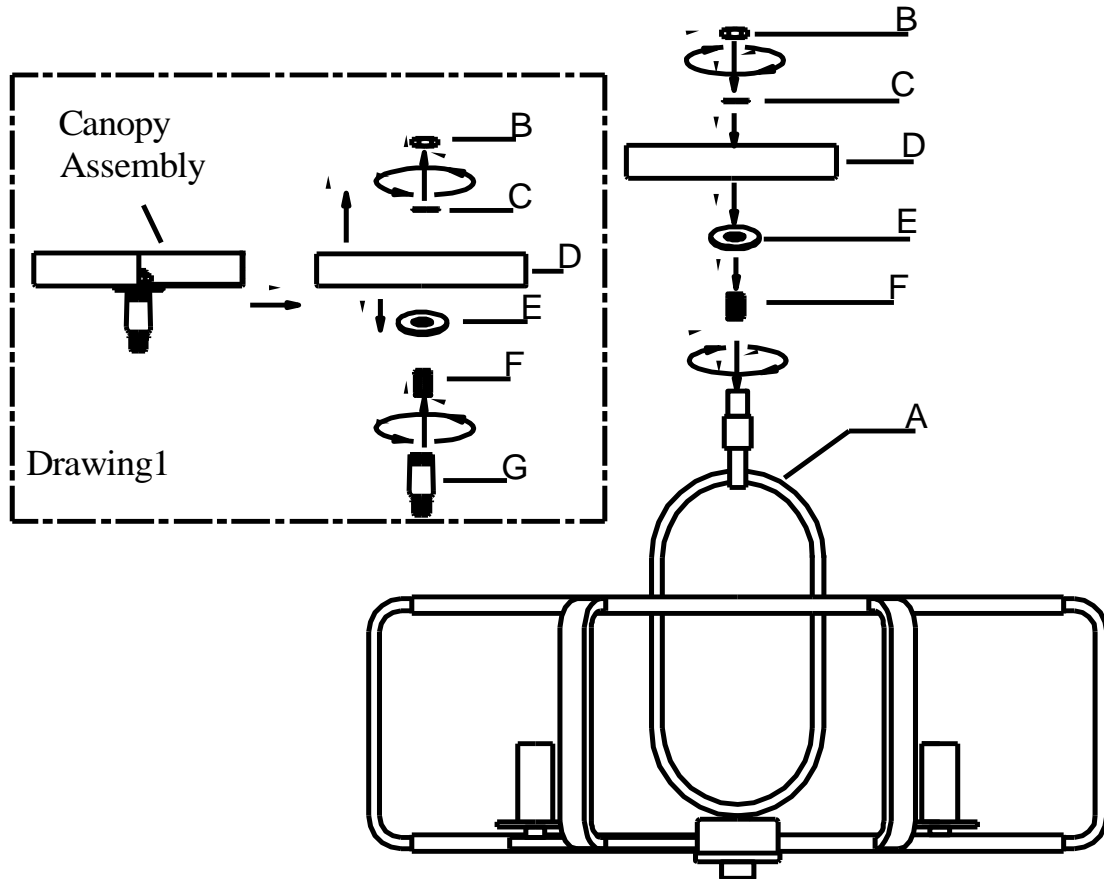


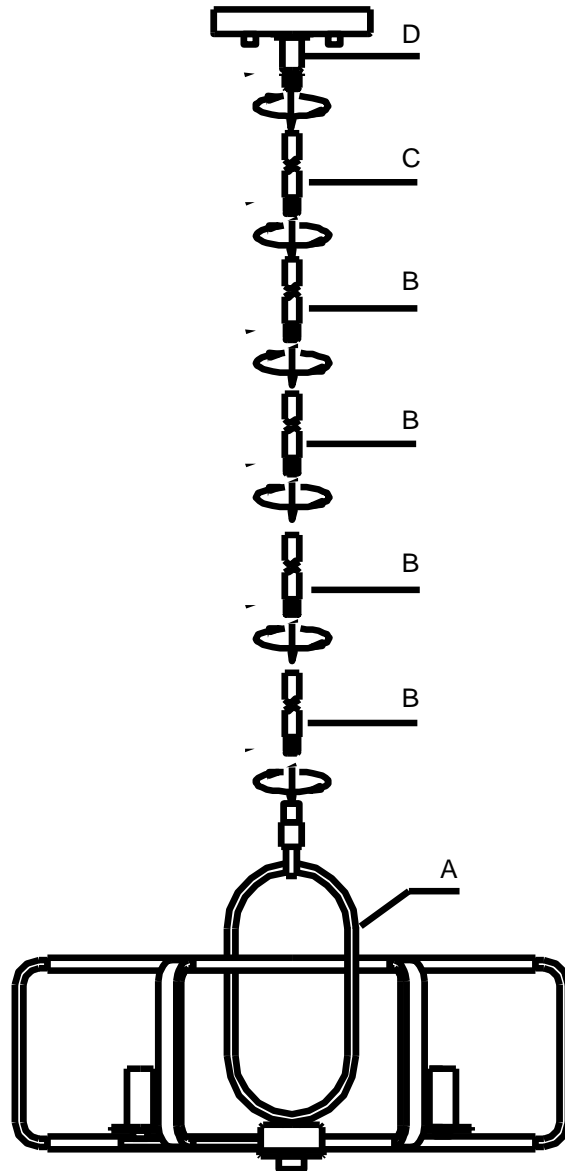
**SEMI-FLUSHMOUNT**



B → A → C → D → E → F → G

1. Carefully unpack and identify all parts referring to the illustration for parts identification.
2. Turn power to the installation point **OFF**.
3. Remove the hex nut (B), lock washer (C), canopy (D), flat washer (E), nipple (F) and swivel (G).
4. Thread the nipple (F) onto the fixture (A).
5. Place flat washer (E), canopy (D) and lock washer (C) over the protruding nipple of fixture body (A) and secure hex nut (C), until snug.
6. Install proper bulbs (not provided) to each socket referring to the markings and / or labels on the fixture for maximum wattage.
7. Referring to the installation instruction with the product for the wiring and installation
8. Restore power to the installation point **ON**. Retain this sheet for future reference.

## PENDANT



B → A → C → D

9. Carefully unpack and identify all parts referring to the illustration for parts identification.
10. Turn power to the installation point **OFF**.
11. Unravel the supply power and ground wires and pass them through the center holes of center tube (B), (C) and canopy assembly (D).
12. Thread the bottom of center tube (B) onto the protruding nipple at top of fixture body (A). Repeat the process for remaining center tube (C) as shown in the diagram, until snug.
13. Install the canopy assembly (D) onto the top of center tube (C).
14. Install proper bulbs (not provided) to each socket referring to the markings and / or labels on the fixture for maximum wattage.
15. Referring to the installation instruction with the product for the wiring and installation
16. Restore power to the installation point **ON**. Retain this sheet for future reference.